



SHANGHAI JINGSHEN BUILDING MATERIALS CO., LTD.

SUPPLIER OF SUN SHADING SYSTEM SPACE SOLUTIONS

# CONTENTS

02-04	ABOUT US
05-08	PROUDUCT INTRODUCTION
09-12	PROUDUCT FEATURE
13-16	PROUDUCT COMPLEMENT
17-18	PROUDUCT DETAIL DRAWING
19-22	PROUDUCT COLOUR
23-24	STANDARD SIZE
25-26	APPLICATION SCENARIO
27-28	SERVICE PROCESS&WARRANT



## MOONLIGHT PAVILION PRODUCT MANUAL

# ABOUT US



Shanghai Jingshen Building Materials Co., Ltd. was established in 2008. The company's team is composed of experienced technical, production, engineering, and management personnel in the industry, who can fully leverage their advantages in design, supporting installation services, and provide customers with a trustworthy platform.

The company focuses on sunshade space solutions, with technology as the core, strict production and management as the pillars, and a high-quality service system as the guarantee. At the same time, it combines advanced concepts and technologies in the same industry at home and abroad to develop and produce a variety of styles of products suitable for different scenarios, and can achieve customized development based on different needs.

The products cover four major series: courtyard, external sunshade, internal sunshade, and mobile sunroom, each with unique and innovative products. In the garden, a set of Japanese style finely decorated Moonlight Pavilions can be paired to expand the living space. You can also select the rainproof louvered pavilion with doors, windows, grilles, or windproof sunshades to make the space more diverse.

Speak with quality, operate with integrity, and strive to provide customers with more cost-effective products as we move forward, becoming a sun shading enterprise that satisfies customers and is recognized by the industry.

# PRODUCT INTRODUCTION

## Design concept

The Moonlight pavilion combines traditional Chinese cultural elements with modern aesthetics, while preserving the traditional architectural style, incorporating modern design techniques and

materials to create a new type of architecture with modernity. It avoids complex decorations and has a simple and atmospheric appearance, which is a modern interpretation and innovative development of traditional culture. Whether in antique gardens or modern urban courtyards, the Lanyue Pavilion attracts people's attention with its unique charm.



## Product Introduction



The Moonlight Pavilion is made of steel structure and full honeycomb panels, with a design of floating eaves and smooth lines. It is paired with an open structure and is equipped with necessary living facilities such as a washbasin, bathroom, airconditioning, and lighting. The Moonlight Pavilion not only provide shade and sun protection, but also resists harsh weather, providing people with an independent leisure space while meeting the practical needs of modern life. It has become a good place for people to relax and entertain, and is a new trend in modern courtyard configuration.



resist harsh weather



sunshade  
sun protection

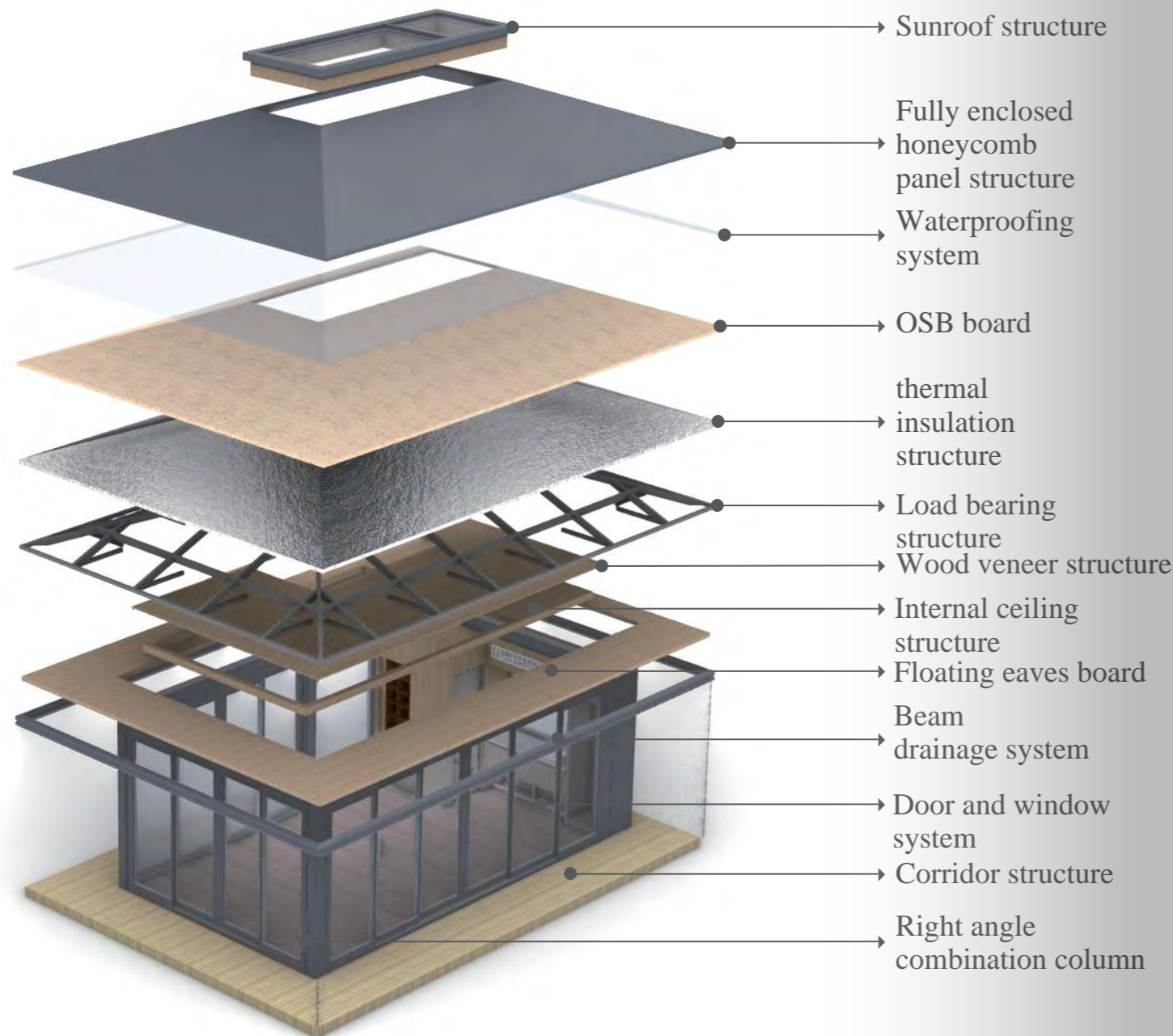


good security



professional  
customization

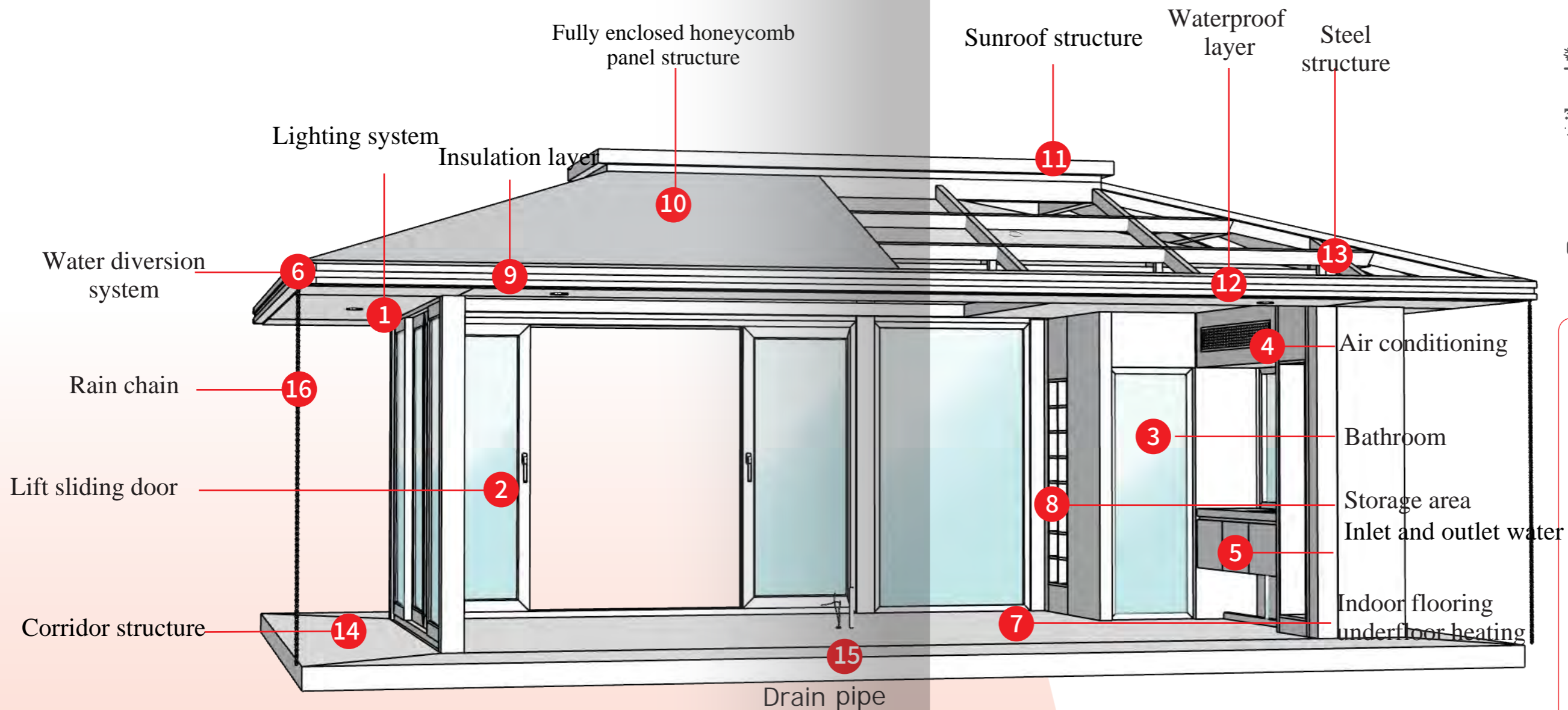
The Moonlight pavilion is made of fully honeycomb panels and it is the new trend of modern courtyard configuration. It is resistant to typhoons, snow accumulation, corrosion, moisture, and insect infestations. It has a beautiful Chinese style appearance and a variety of styles for you to match.









<b>NAME</b>	The Moonlight pavilion
<b>MATERIAL</b>	Steel structure, fully enclosed honeycomb panel, wood veneer
<b>SIZE</b>	6*6M 6*8.3M 6*13M Customized size
<b>STYLE</b>	Durable and beautiful, a new Chinese style
<b>COLOUR</b>	Classic colors: coffee, gray, other colors can be customized
<b>PRICE</b>	Calculated by area and configuration (please consult customer service for details)
<b>CUSTOMIZED</b>	Customized and free design
<b>ADVANTAGE</b>	Anti corrosion, sun shading, rain shelter, typhoon resistance, snow resistance, environmentally friendly and pollution-free
<b>APPLICATION</b>	Villa courtyard, garden landscape, vacation resort, garden design, etc



Jingshen Building Materials focuses on creating high-quality outdoor sunshade spaces with comprehensive supporting products, making outdoor leisure life more comfortable and of higher quality.



-  Sunshade and insulation
-  Wind resistant
-  Snow prevention
-  Rainproof and corrosion-resistant
-  Personalized customization
-  Supporting products

- 1. Indoor and outdoor lighting system
- 2. Lift sliding door system
- 3. Bathroom
- 4. Air conditioning
- 5. Culvert system
- 6. Water diversion system
- 7. Indoor flooring underfloor heating
- 8. Storage area
- ...



Protect Yourself From Rain & Snow,  
Extend the Outdoor Season.

## PRODUCT FEATURE

### Sunshade | Insulation

The top slope design can block direct sunlight and reduce heat transfer to the pavilion. The wooden veneer structure has a certain insulation effect, which can slow down the conduction of external heat.



The floating eaves design of the pavilion can create a shaded space, avoiding strong sunlight from directly shining into the interior of the pavilion and providing a shaded area around it. The combination of ponds can help reduce the temperature of the surrounding environment, indirectly providing insulation for the pavilion.

### Rain-proof | Drainage

The roof of Moonlight Pavilion adopts a sloping design, which helps rainwater to quickly flow down and not stay on the roof, reducing the erosion of rainwater on the roof.

The edge of the pavilion's floating eaves is equipped with drainage channels, allowing rainwater to flow through the channels to the drainage outlet, and then flow down through the rain chain to the ground, avoiding the risk of building corrosion caused by the accumulation of rainwater on the top of the pavilion. At the same time, it also eliminates the potential impact of rainwater splashing on pedestrians.



### Ventilate

The design of the Moonlight Pavilion emphasizes natural ventilation, with sliding doors and a top skylight that facilitate air circulation, take away the heat inside the pavilion, and keep it cool.

The open structure of the Moonlight Pavilion allows for free air circulation, keeping the interior cool even in hot summer days.



---

# PRODUCT FEATURE



## Snow cover resistant Severe weather resistant

The fully enclosed honeycomb panel structure is snow resistant, corrosion-resistant, and can resist hail and other object impacts to a certain extent, ensuring a durable and new appearance.

The main steel structure, for areas that are particularly susceptible to strong winds, can be reinforced with this structure for greater stability.

---

## Moisture and corrosion resistant

The top has waterproof and thermal insulation structure to prevent wind and rain from entering the room through gaps, while also reducing the erosion of the frame by rainwater and snow.

A reasonable floating eave design can provide sufficient shelter for windows and reduce the corrosion of walls caused by rainwater and snow falling on the windows



---

## Environmentally friendly and pollution-free

During the construction of the Moonlight Pavilion, environmentally friendly materials such as honeycomb panels and wood were used, which caused less environmental pollution. Traditional methods were used during construction to reduce noise, waste, and other pollution.

There will be a large amount of green vegetation around the Moonlight Pavilion, which not only beautifies the environment and purifies the air, but also maintains the balance of the ecosystem in combination with the pond.



# PRODUCT COMPLEMENT

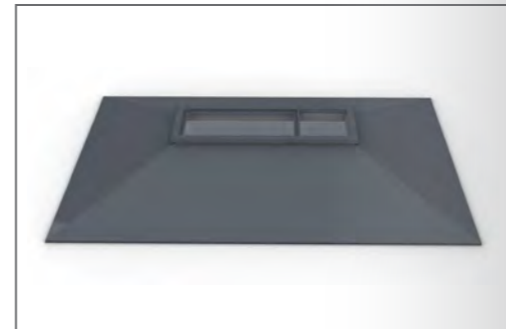
## 1 | Lighting system

The top of the Moonlight Pavilion is embedded with LED lights both indoors and outdoors, providing direct illumination with even and soft brightness, creating a perfect lighting atmosphere for you at night. Rated power of 12W, with a service life of up to 1.6W hours.



## 2 | Skylight

The main functions of the skylight are: firstly, to provide additional natural lighting, making the space inside the pavilion brighter and reducing reliance on artificial lighting, while creating an atmosphere that is close to nature; secondly, at night, one can enjoy the view of the moon, which is also one of the origins of the name of the moonlight pavilion; thirdly, the skylight can also promote air convection and help cool down the pavilion.



## 3 | Sliding door

The sliding door is made of all aluminum alloy and tempered glass, using imported rollers with excellent manufacturing technology, sturdy and durable, easy to push and pull, and convenient. Adjust the opening status of the door according to weather and usage needs. Ensure good lighting inside the pavilion while providing a transparent view, allowing people to experience the outdoor scenery even inside the pavilion.



# PRODUCT COMPLEMENT

## 4 | Wash basin

The washbasin can be located near the exit of the bathroom or the entrance of the pavilion, making it convenient for users to wash their hands before and after entering the pavilion. The design of the washbasin can be coordinated with the overall style of the Moonlight Pavilion, and a culvert system should be installed to ensure smooth water supply and wastewater discharge.



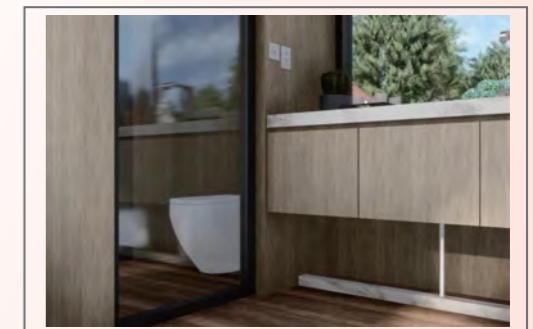
## 5 | Storage area

The storage area can be designed as a built-in cabinet or a separate storage rack, placed on one side of the pavilion or in a concealed corner to save space and maintain cleanliness inside the pavilion. The storage area can be used to store personal items, cleaning supplies, gardening tools, etc., providing sufficient storage space.



## 6 | Bathroom

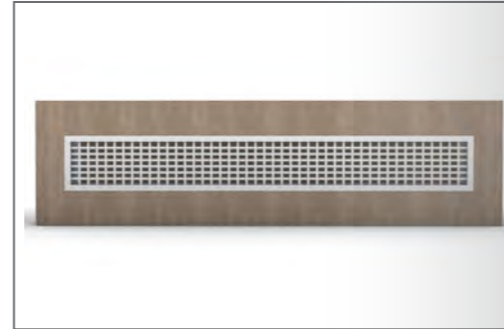
The bathroom is located on one side of the pavilion to ensure privacy and hygiene. The design of the bathroom is consistent with the overall style of the Moonlight Pavilion, which not only provides a beautiful leisure space but also meets the practical needs of modern life.



# PRODUCT COMPLEMENT

## 7 | Air conditioner

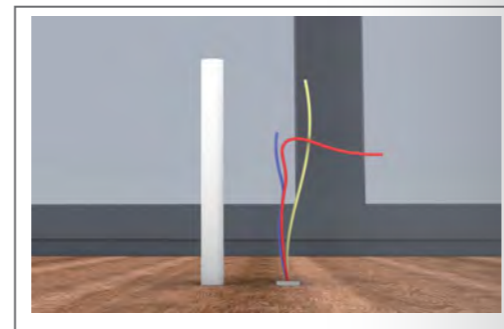
The air conditioner is installed on the top or side of the pavilion, hidden and will not affect the beauty of the pavilion. According to climate and seasonal changes, choose a suitable air conditioning system that can both cool and heat, ensuring comfort throughout the four seasons inside the pavilion.



## 8 | Floor heating

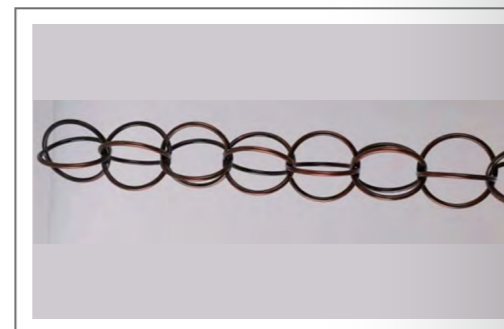
The underfloor heating system is installed under the floor of the pavilion. Based on climate and seasonal changes, the underfloor heating is turned on to regulate the temperature inside the pavilion and reduce energy consumption.

There is a drainage outlet in the middle of the pavilion floor, which can be equipped with a filter or other protective device for quickly draining wastewater when drinking tea at the tea table.



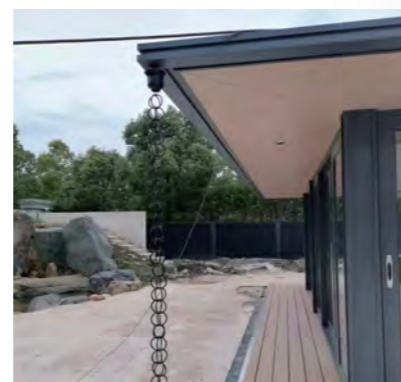
## 9 | Water diversion system

The floating eaves of the pavilion are equipped with drainage channels, and the rain chain is an indispensable component of the courtyard water diversion system, perfectly replacing the closed drainage channel drainage structure. Its main function is to guide the flow of rain water, use gravity to transport rainwater from the roof to the bottom, and effectively prevent the building from being eroded by rainwater.



---

## PRODUCT DETAILS



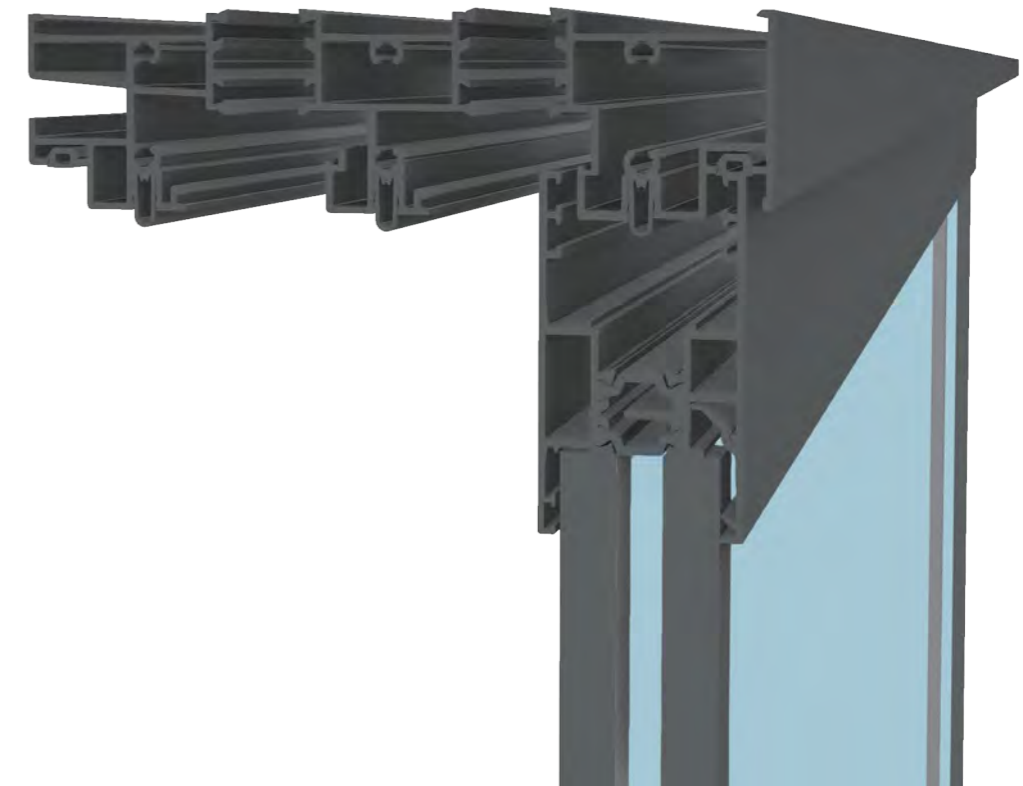
---

## PRODUCT DETAILS

Example diagram of top steel structure



Example diagram of lift sliding doors structure





# PRODUCT COLOUR

Two classic colors to choose from

Two classic sizes to choose from, easily meeting various style combinations



Grey

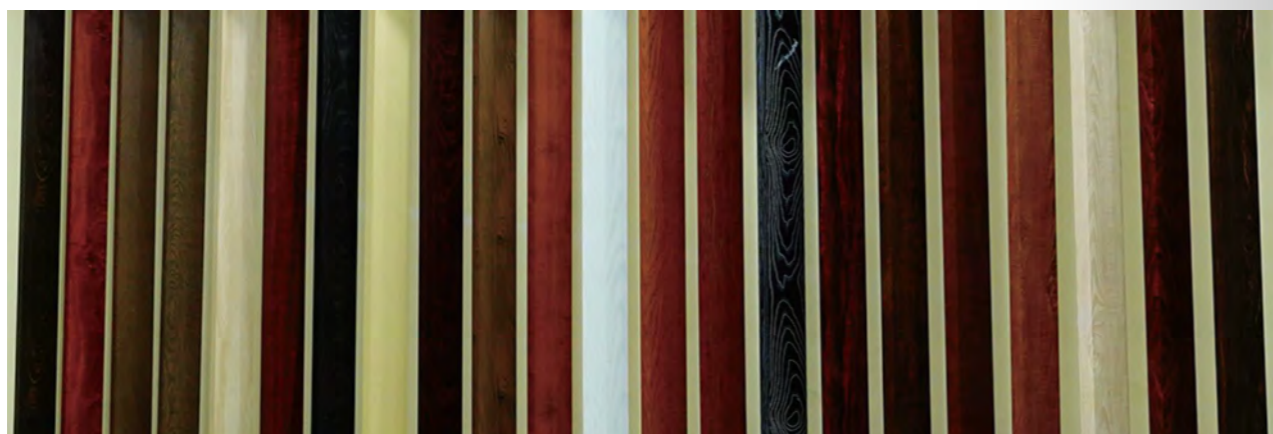


Coffee color

Other colors of the product can be customized according to personal preferences and venue characteristics



Color sample display



# PRODUCT COLOUR



# STANDARD SIZE

1

width	6000mm
length	6000mm
configuration	lighting system, air conditioning, storage area, underfloor heating
	lift glass sliding door, skylight, washbasin
exterior color	paint according to professional color card (customizable)
installation method	independent installation



2

width	6000mm
length	8400mm
configuration	lighting system, air conditioning, storage area, underfloor heating
	lift glass sliding door, skylight
	washbasin, bathroom
exterior color	paint according to professional color card (customizable)
Installation method	independent installation



# STANDARD SIZE

## A high-quality moonlight pavilion is a good pavilion

The carefully designed color scheme not only makes the Moonlight Pavilion a highlight in the courtyard, but also conveys specific emotions and atmosphere.

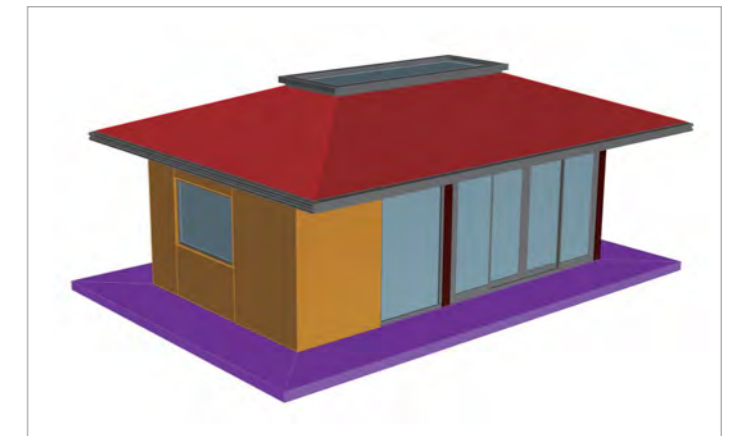
3

width	6000mm
length	13000mm
configuration	lighting system, air conditioning, storage area, underfloor heating
	lift glass sliding door, skylight
exterior color	paint according to professional color card (customizable)
Installation method	independent installation



4

width	Customized size
length	Customized size
configuration	lighting system, air conditioning, storage area, underfloor heating
	lift glass sliding door, skylight
	washbasin, bathroom (customizable)
exterior color	paint according to professional color card (customizable)
Installation method	independent installation



---

# APPLICATION SCENARIO

Suitable for various fields, including villa courtyards, garden landscapes, vacation resorts, garden designs, etc., all with specific requirements can be designed and installed.

## Villa courtyards



## Garden designs



---

# APPLICATION SCENARIO

## Garden landscapes





## Vacation resorts



# SERVICE PROCESS

- **01**  
Requirement communication  
Listen to customer needs and understand their usage environment
- **02**  
Appointment measurement  
Pay a deposit and make an appointment for onsite measurement
- **03**  
design scheme  
Provide detailed solutions based on customer needs and actual dimensions
- **04**  
Determine the plan  
Based on the dimension drawing, rendering, and line drawing, select the color and determine the final solution
- **05**  
Customized production  
According to the final solution, the production cycle is 15-25 days
- **06**  
Logistics transportation  
Large items are shipped by default through logistics and will be delivered to the local area
- **07**  
Installation upon arrival  
If installation is required, it needs to be explained in advance
- **08**  
Worry free after-sales service  
5-year warranty, the company strictly controls product quality. In order to ensure product quality, multiple tests have been conducted

# WARRANT

- **About color difference**  
Due to factors such as photography equipment, displays, and lighting, there may be slight color differences. Please note that.
- **About measurement and installation**  
In most parts of the country, on-site measurements can be taken, and professional technicians can be arranged for on-site installation to ensure the accuracy of the dimensions.
- **About refunds**  
Our product is a customized product. Production has already started and cannot be resold. Refunds are not supported for non quality issues.
- **About quality**  
The source factory strictly selects materials and controls product quality.

Shanghai Jingshen Building Materials comes with a five-year warranty



Shanghai Jingshen Building Materials has a five-year warranty, which indicates that the company has strict requirements for product quality. In order to ensure product quality, the company has conducted multiple tests and provided customers with high-quality solutions and products.



HONESTY SERVICE FIRST WIN-WIN COOPERATION



Follow the public account

Shanghai Jingshen Building Materials Co., Ltd

☎ | 137 0177 0484

📍 | 207A, No. 950 Songhua Road, Qingpu District, Shanghai

🌐 | [www.jingshenjc.com](http://www.jingshenjc.com)