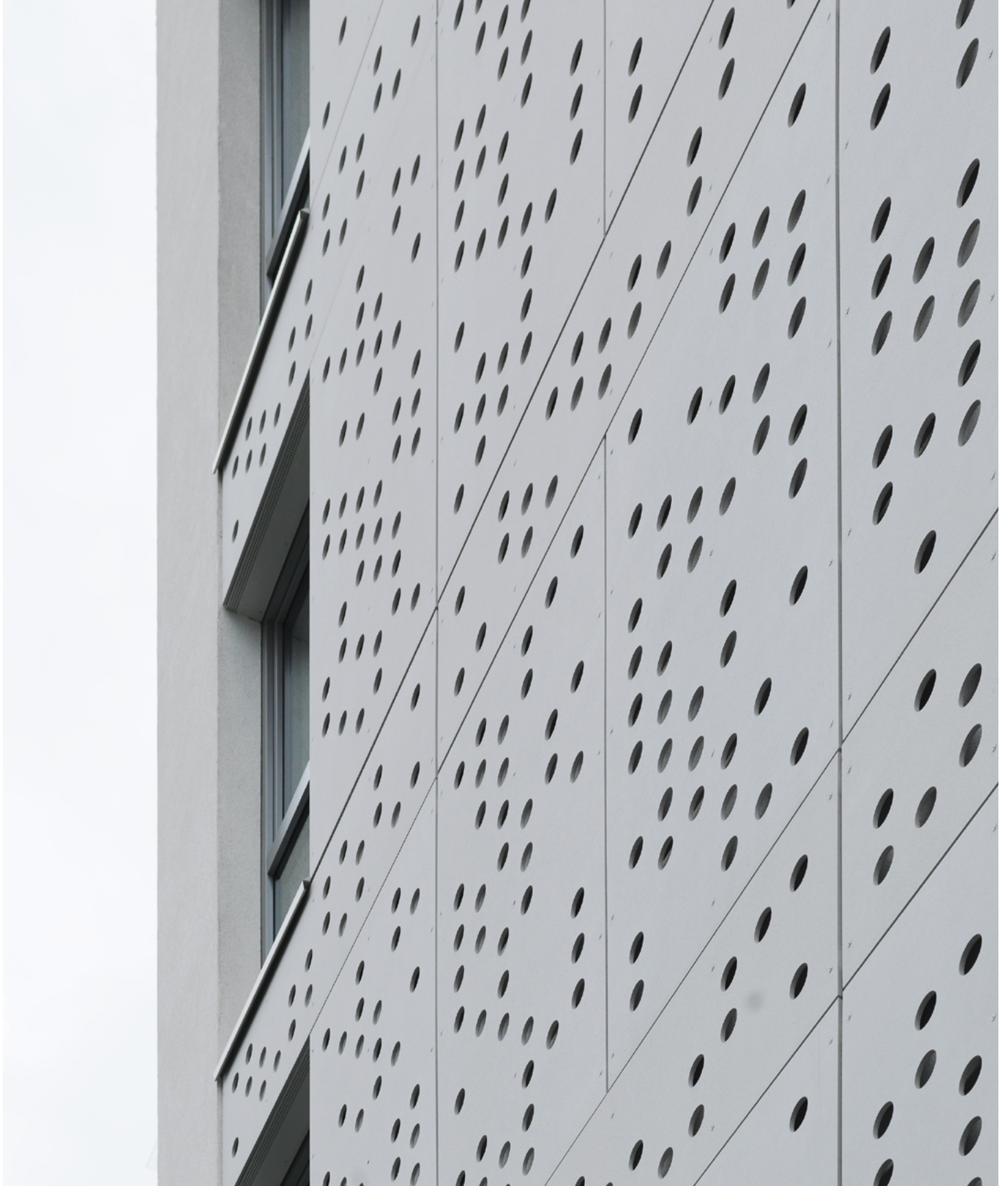


Rieder

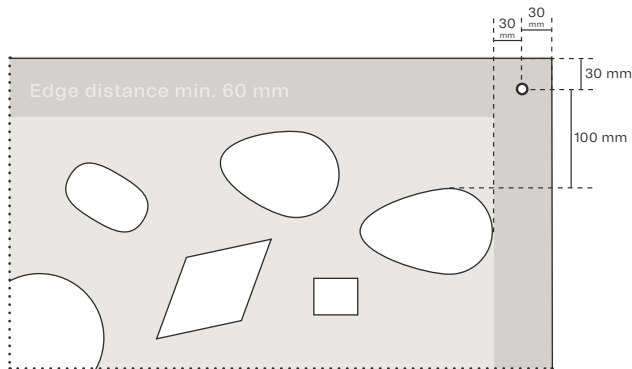
# Perforation

Data sheet

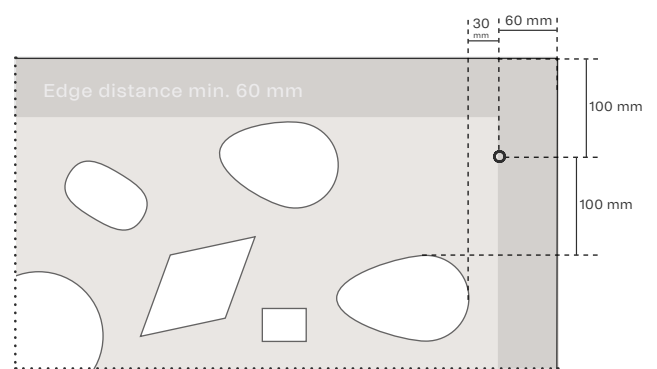


# Product characteristics

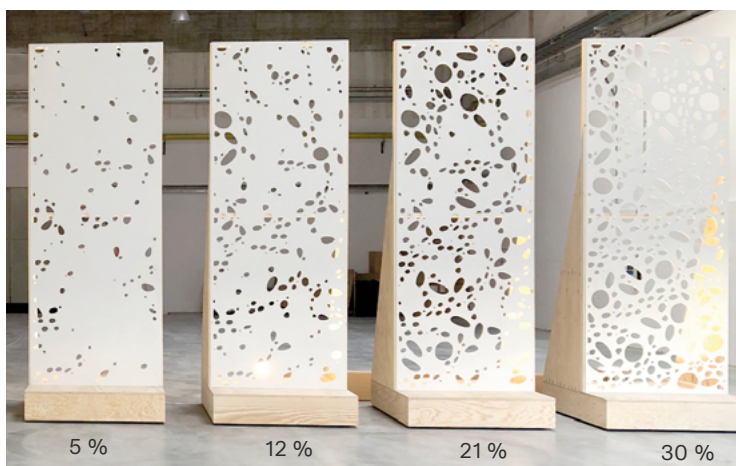
SPECIFICATIONS	Size	max. 1510 x 5000 mm
	Thickness	13 mm
	Surface	matt, ferro light, ferro; solo (interior only)
	Back (invisible side)	untreated ferro
	Colour collections	greyscale, timber, bricky, pietra
	Textures	available on request
PERFORATION	Perforation type	any type and pattern
	Hole percentage	max. 30% (review of statics is required)
	Hole diameter	min. 6 mm
	Perforation angle	45° to 90°
	Cutting width	min. 1.5 mm
	Edge distance perforation	min. 60 mm
	Distance between perforations	must be checked individually (depending on perforation size, shape and hole percentage)
FIXING	Mounting	manually or with vacuum suction; handling of the panel with special care; depending on the hole percentage, a transport frame may be required
	Visible	rivet, screw (on wooden supporting structure) <sup>1</sup> : distance to slat edge at least 30 mm
	Concealed	undercut anchor: vertical distance to the edge of the panel min. 60 mm, additional supporting structure or bracing may be necessary, depending on structural calculation



Visible fixing



Concealed fixing



Example elliptical perforation, varying hole percentage

## Important!

- Check for each specific project:
- Structural system calculation
  - Technical feasibility
  - Hole percentage or hole distribution
  - Climbing protection
  - Fall protection
  - Burglary protection
  - Installation options
  - Handling

<sup>1</sup> For visible attachment using screws on a wooden supporting structure, no approval is available. The relevant country-specific regulations must be adhered to. Additionally, <sup>1</sup> the technical foundations for the attachment must be followed.