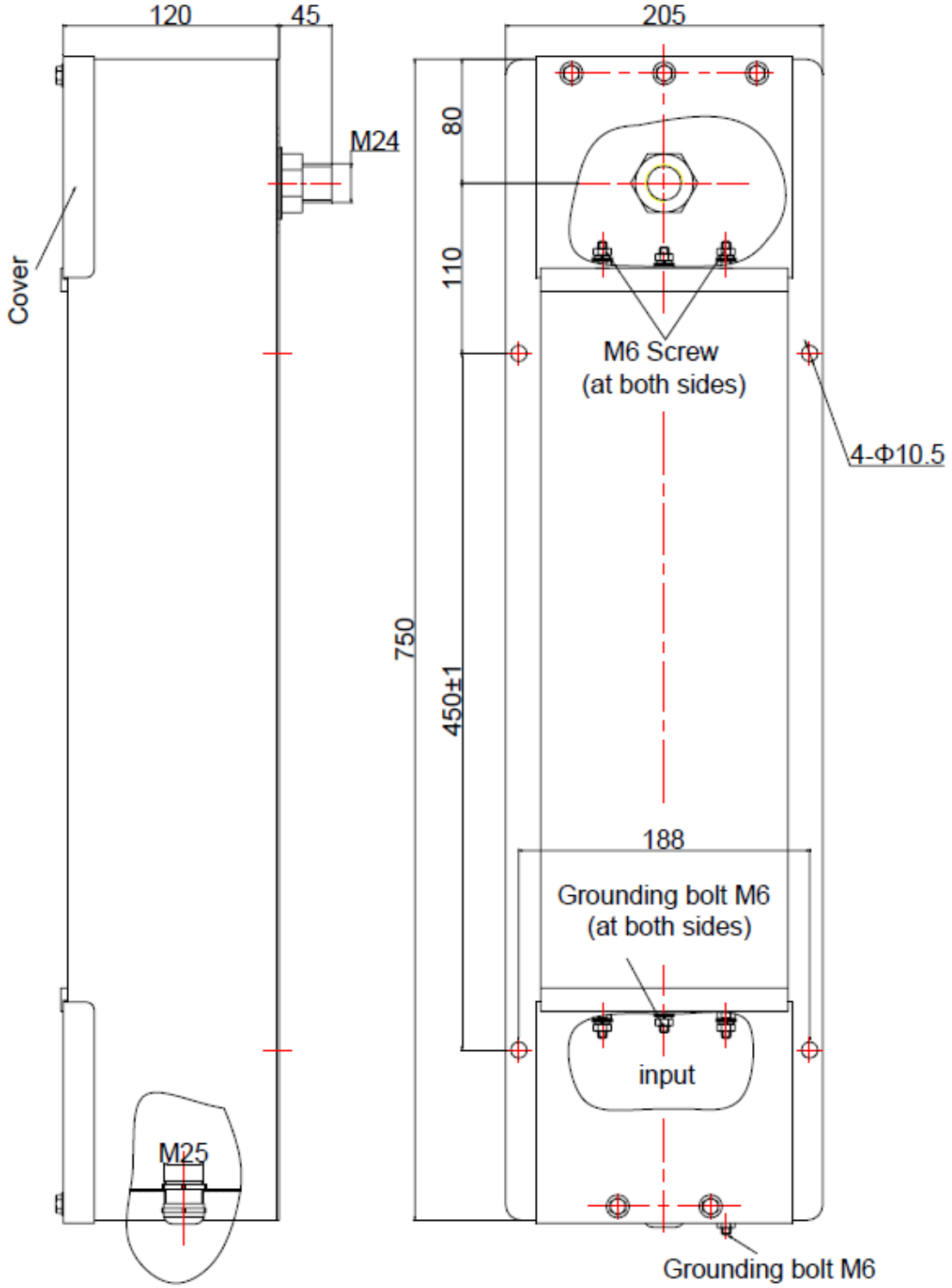




U82C2x32

Power Line EMI Filter

1. Dimensions (mm)





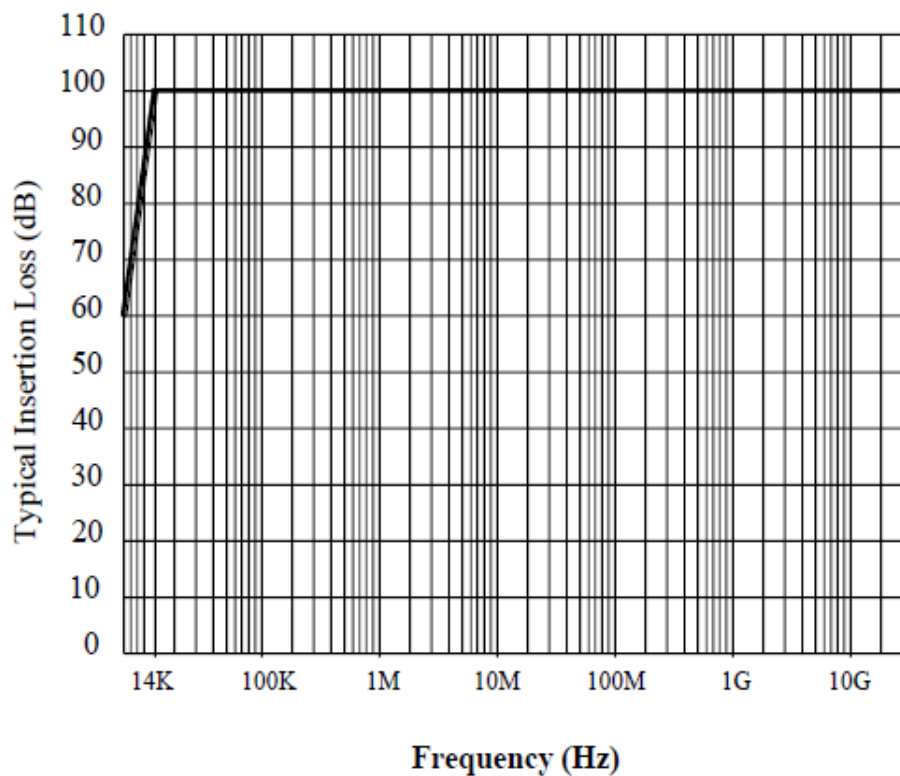
2. Specifications

Rated Voltage	277VAC/500VDC
Operating Frequency	0-60Hz
Rated Current	2x32A
Insertion Loss	100dB, 14kHz-40GHz
Climatic Category	25/070/21
Hipot Test	1200VDC, 2 SEC

3. Typical Applications

EMC Anechoic Chambers

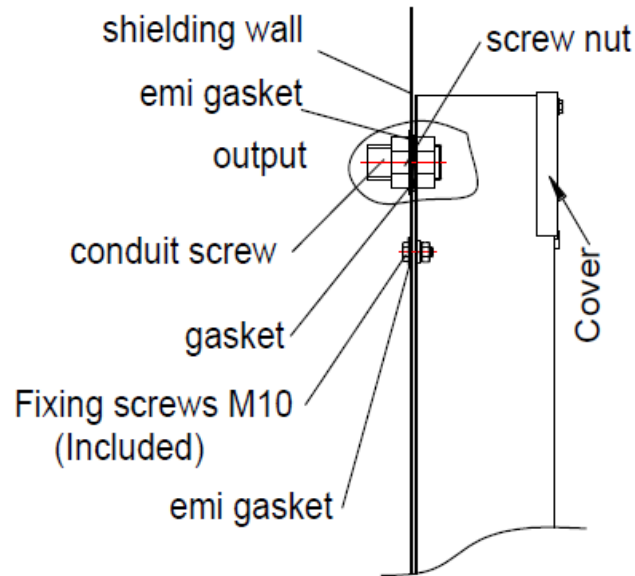
4. Typical Insertion Loss Performance Curve (acc. to MIL-STD-220)



**Asymmetric Performance in 50 ohm System
With or Without load**



5. Installation Diagram



6. Accessories List

- ① M24 Conduit Screw: 1pc
- ② Gasket 24: 1pc
- ③ M24 Screw Nut: 1pc
- ④ EMI Gasket 24: 1pc
- ⑤ Certificate: 1pc
- ⑥ Cable Gland M25: 1pc